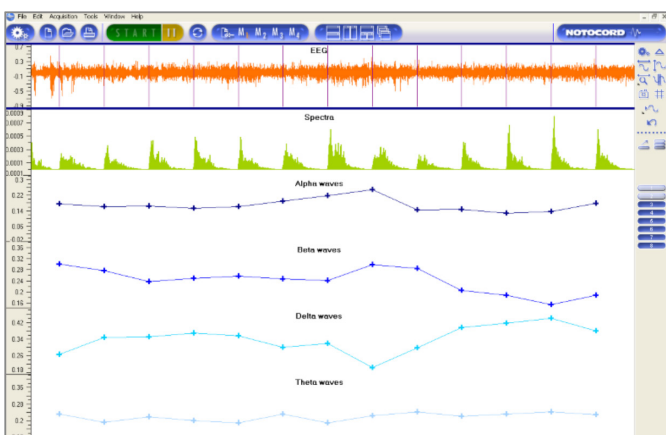


EEG10a/b

SPECTRAL ANALYSIS OF ELECTROENCEPHALOGRAM



EEG analysis with power spectra and frequency bands display

KEY FEATURES

- Online EEG evaluation by spectral analysis
- User-defined selection of EEG rhythms and matching frequencies
- User-defined epoch duration
- Computation of absolute / relative power for each defined EEG rhythm
- Continuous display of spectra along with raw signals
- RMS and MPF computation (EEG10b)
- Compatibility with video acquisition and analysis
- GLP and 21 CFR Part 11 compliant

ANALYZING BRAIN ACTIVITY

Electroencephalogram analysis provides a lot of valuable information on **brain activity**, of particular interest in studies on:

- Drug effects on the central nervous system in Safety Pharmacology
- Therapeutic properties of a new drug in Discovery Studies
- EEG rhythms in sleep studies

POWERFUL SPECTRAL ANALYSIS

Understanding biological phenomena often requires the analysis of **periodic patterns** inherent to the signal. In most cases, analyzing the periodicity of these patterns is not an easy task when only considering the time domain. **Spectral analysis** however, consists in representing the signal in the **frequency** domain.

EEG10a/b performs spectral analysis of electroencephalogram using **Fourier transformation**, a complex mathematical operation, yet the module remains easy to set. It provides a high-quality representation of the whole signal with **low noise** interference.

User can define **rhythms** of interest in terms of frequency bands and epoch duration on which the analysis is to be performed. Results may be averaged on a user-defined number of consecutive epochs.

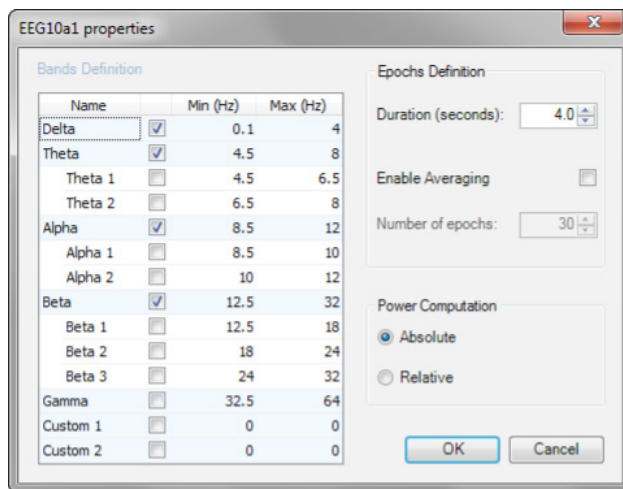
To increase readability of the analysis, **spectra** are displayed together with raw signals and computed parameters. You may visualize spectra changes either on our regular CTD60a/v display modules or on XYD30a, our 3-D display scope.

HIGH SPECIFICITY

With up to 17 outputs available when all **bands** are activated in the module properties box, EEG10a/b offers powerful analysis capabilities.

The properties window offers **high-flexibility** level for a **customized** analysis with numerous user-defined criteria such as:

- Band definition: Alpha, Beta, Delta, Theta waves
- Associated frequencies
- Epoch duration
- Result averaging on the number of epochs
- Absolute or relative power computation



EEG10a/b—Band and epochs parameters

EEG10b extracts the same information than EEG10a but also calculates the Root Mean Square (RMS) and the Mean Power Frequency (MPF) on the same epoch.

+ Related products

CTD60a/v	Universal chart display / with video
IRF10a	Infinite impulse response filter
NVC31a	EMG activity analyzer
RME10s	Reference mark editor for seizure
VSH10a/b	4-/8- channel video acquisition server

Working in a GLP environment?

21 CFR Part 11 compliance is achieved via our AccessManager security application, activating a highly secure and compliant Audit Trail.

EEG10a/b

EUROPE - Headquarters

NOTOCORD SAS
Tel. +33 (0)1 34 80 00 00
information@notocord.com

NORTH AMERICA

NOTOCORD Inc.
Tel. +1 888 204 7770
information@notocord.com

JAPAN

PRIMETECH Corp.
Tel. +81 (0)3 3816 0851
sales@primetech.co.jp

SOUTH KOREA

IWOO Scientific Corp.
Tel. + 82 (0)2 3473 2332
sale@iwoo.co.kr

SEJONG-BIO
Tel. + 82 (0)4 2826 9473
sales@sejong-bio.co.kr

TAIWAN

MESONICS Systems Ltd.
Tel. + 886 2 2736 4066
info@mesonics.com.tw

CHINA

B&E Teksystems Ltd
Tel. + 86 10 8758 5773
bandetek@hotmail.com

INDIA

BIO-DOT Scientific, New Delhi
Tel: +91 11 2636 3490
upkar@biodotscientific.com

www.notocord.com
information@notocord.com
+33(0) 1 34 80 00 00



Version 1.0 - © NOTOCORD - All rights reserved.

Because we have a policy of continuous product improvement, NOTOCORD reserves the right to change specifications without notice. The information provided in this brochure are not intended to form part of any offer or contract.

